

CD Unipack 202™

The CD Unipack 202 is versatile, durable and includes a Tea-Stained light kit.



Oiled Bronze CD Unipack with 52" Contractor's Design
Oiled Bronze Blades and Bowl Kit

Model-Finish **CDU2020B**

Blade-Finish **BCD52-0B**

Light-Finish **Included**

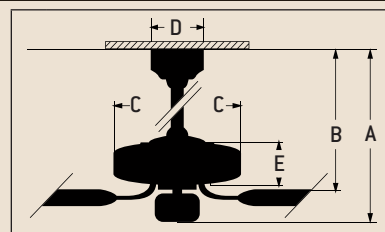
Features

- Standard, 3 Speed Reversible Motor
- 2" and 4" Downrods *(Included)*
- 30 Year Limited Warranty
- Blades Sold Separately
- Tea-Stained Glass Bowl Kit
(3-60W Candelabra Bulbs Included)
- Universal Control Adaptable
(Optional)
- Additional Blade Selections In 42" Size Available

Specs

- | | |
|--|------------|
| ■ Blade Sweep Opt. | 42", 52" |
| ■ Number of Blades | 5 |
| ■ Blade Pitch | 12° |
| ■ Motor Size (MM) | 153 x 12 |
| ■ AMPS (HI Speed) | 0.7 |
| ■ Watts (HI Speed) | 67 |
| ■ RPM (HI-MED-LOW) | 200-120-55 |
| ■ Shipping Wt. (lbs.) | 18 |
| ■ CU. FT. in Carton | 1.6 |
| ■ Airflow*
<i>(Cubic Feet Per Minute)</i> | 6,164 |
| ■ Electricity Use* | 67 Watts |
| ■ Airflow Efficiency*
<i>(Cubic Feet Per Minute Per Watt)</i> | 92 |

Ceiling Drop Dimensions



- | | |
|------------------|------------------|
| A: 2" DR - 15.0" | B: 2" DR - 8.5" |
| A: 4" DR - 17.5" | B: 4" DR - 10.0" |
| C: 11.0" | D: 5.125" |
| E: 3.5" | |

DR: Downrod

"Compare: 36" to 48" ceiling fans have airflow efficiencies ranging from approximately 71 to 86 cubic feet per minute per watt at high speed."

"Compare: 49" to 60" ceiling fans have airflow efficiencies ranging from approximately 51 to 176 cubic feet per minute per watt at high speed."

** Due to 2005 EPACT regulations, light kits may be subject to change

Popular Combinations



Aged Bronze CD Unipack with 52" Contractor's Design Walnut Blades and Bowl Kit

Model-Finish **CDU202AG**
 Blade-Finish **BCD52-WB6**
 Light-Finish **Included**



European Bronze CD Unipack with 52" Contractor's Design Washed Walnut Birch Blades and Bowl Kit

Model-Finish **CDU202EB**
 Blade-Finish **BCD52-WWB**
 Light-Finish **Included**



Brownstone™† CD Unipack with 52" Contractor's Design Washed Walnut Birch Blades and Bowl Kit

Model-Finish **CDU202BS**
 Blade-Finish **BCD52-WWB**
 Light-Finish **Included**



Rustic Iron CD Unipack with 52" Contractor's Design Walnut Blades and Bowl Kit

Model-Finish **CDU202RI**
 Blade-Finish **BCD52-WB6**
 Light-Finish **Included**

Available Finishes



AG
Aged Bronze



BS
Brownstone™†



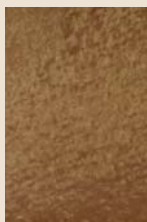
EB
European Bronze



OB
Oiled Bronze



RI
Rustic Iron



SL
Saddle Leather

Blade Options

Type 5 Blades
(see page 200)



Light Kit Options

Bowl Light Kit Included



Universal Remote Control System
(Optional)
 UC-2000 Series
(see page 223)

†Brownstone™ is a registered trademark of Dolan Designs