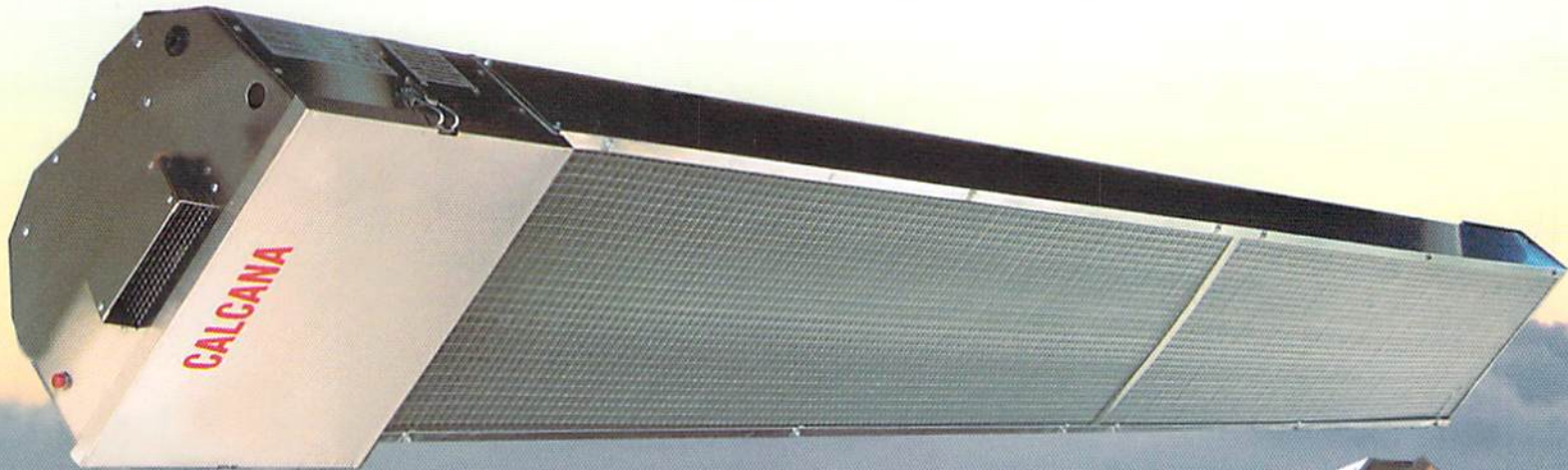


CALCANA



MODULATING REMOTE
CONTROL PANEL
(patent pending)



**Commercial & Residential
Infrared Patio Heating Systems**

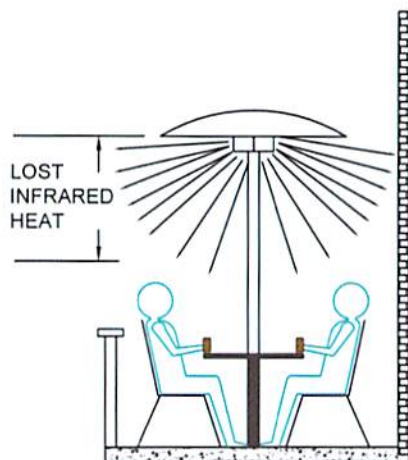
Calcana Custom Patio Heating Solutions

"MUSHROOM STYLE"

CALCANA INFRARED HEATWAVE

MORE FUEL

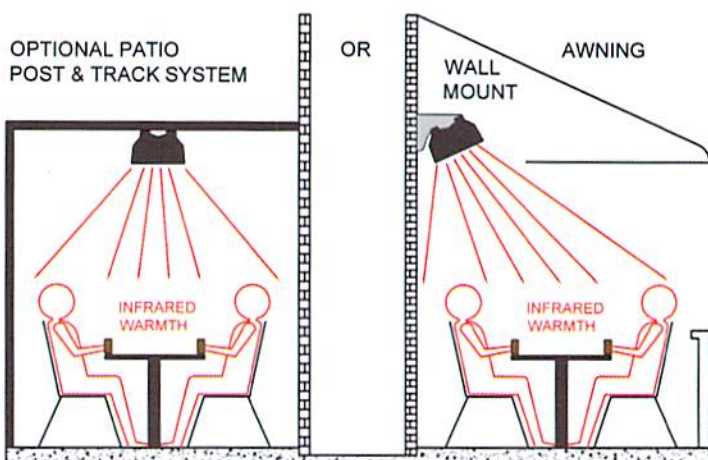
LESS HEAT



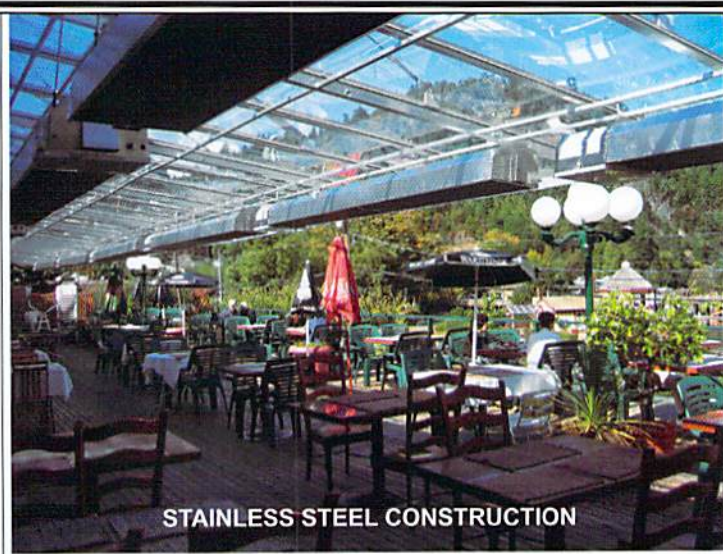
VS

MORE HEAT

LESS FUEL



SIDE WALL MOUNTING



STAINLESS STEEL CONSTRUCTION

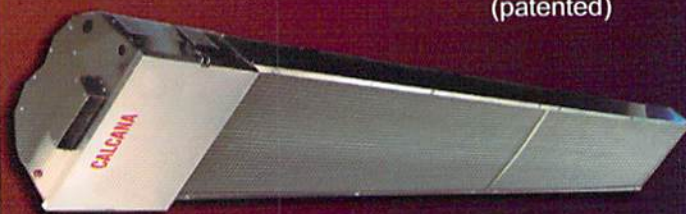
HIGH OUTPUT SERIES
(patented)



PH-40HO

40,000 Btu/Hr
5' Length

HIGH OUTPUT SERIES
(patented)



PH-75HO

75,000 Btu/Hr
10' Length

Experience a *Calcana Heatwave* on your patio today!



DESIGN FEATURES INCLUDE:

SAFELY ENCLOSED FLAME:

The flame is protected from wind and is located inside the Low Intensity Infrared Emitter Tube. This tube captures heat energy contained in hot flue gases and turns the energy into comfortable HEAT waves.

LOW CLEARANCE TO COMBUSTIBLES:

Can be safely installed in locations with awnings.

SLIM, NARROW DIMENSIONS:

Easy to install in narrow, low overhead clearance locations; suitable for long, narrow street side patio locations.

OVERHEAD DESIGN:

No floor space is lost as units hang from existing trellis or other overhead structures. Units can also mount to walls at an angle.

VARIABLE INPUT BURNER:

Patent pending, variable input design provides the right level of heat output for each location

FOUR LENGTHS TO CHOOSE FROM:

5, 10, 15 & 20 foot lengths are available. Multiple units can be grouped together to achieve any length required.

CERTIFIED FOR OUTDOOR & INDOOR APPLICATIONS:

Units are design certified to operate in outdoor environments, which include wind, rain, snow and temperatures as low as -40F. For indoor applications, the units can be safely vented through the wall or roof.

EASY-LIGHT IGNITION SYSTEM:

No pilot lights to ignite by hand, no valves to turn, no thermocouples to replace. By using a reliable, 3-Try, direct spark, electronic, 100% safety shut off, ignition system, units safely and consistently operate in all types of weather with the flick of a switch.

LOCAL OR REMOTE CONTROL:

Heaters can be operated remotely, or controls can be located on the units.

LOW MAINTENANCE:

No ceramic parts to break, or replace. No thermocouples to replace. Emitter tubes do not glow cherry red, therefore are not fatigued to the point of premature failure.

ECONOMICAL TO OPERATE:

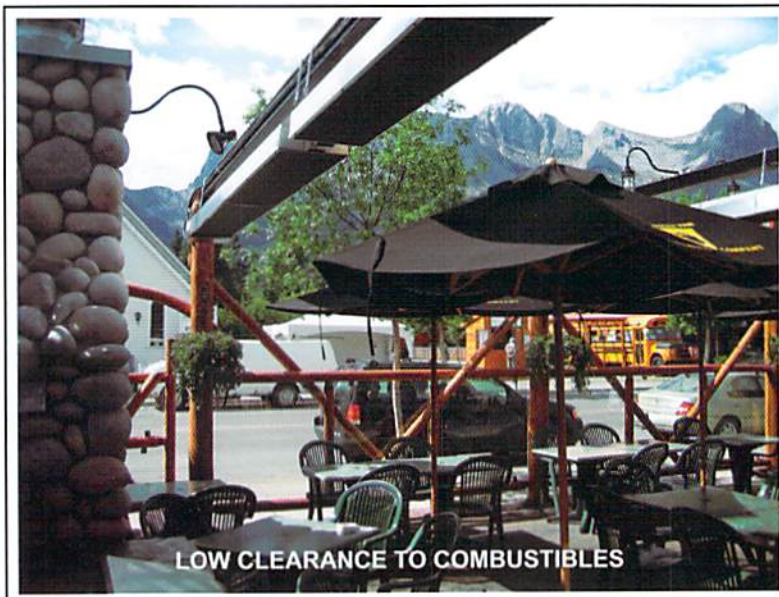
Highly efficient reflectors capture the radiant energy, and direct it to the patio area. Heats more area with less fuel than any other style of patio heater.

HEAVY DUTY CONSTRUCTION:

High quality materials & workmanship eliminates metal fatigue and reflector warp or separation. Stainless Steel options are available.

NATURAL GAS OR PROPANE:

Units available for use with either fuel.



SPECIFICATIONS

General Specifications

Rating (Input: Natural and L.P. Gas) 0-4500 ft elevation.

STANDARD SERIES

Model	Min Input (BTU/Hr)	Max	Length
PH-40A	20,000	40,000	11.5'
PH-50A	25,000	50,000	16.5'
PH-75A	37,500	75,000	21.5'

HIGH OUTPUT SERIES (patented)

Model	Min Input (BTU/Hr)	Max	Length
PH-40 HO	20,000	40,000	5'
PH-75 HO	37,500	75,000	10'

Gas Pressure at Manifold:

Natural Gas	3.5" W.C.
L.P. Gas	10.5" W.C.
Gas Connection Size	0.5" N.P.T.

Gas Inlet Pressure:

Gas	Minimum	Maximum
Natural	4.5" W.C.	14.0" W.C.
L.P.	11.5" W.C.	14.0" W.C.

Electrical Rating:

DSI Ignition
120v, 60 Hz, 1 Amps
24 volt low voltage On/Off – Modulating control panel

Standard Equipment:

Variable input temperature control panel, modulating gas burner, low noise combustion air blower, visual burner inspection sight glass, air proving safety switch, 3-try spark ignition control, 100% safety shut off valves, 4" heat treated aluminized radiant emitter, aluminum reflector, heat economizer baffle, stainless steel hangers and burner-head, decorative grill, indicator light. Stainless steel construction on High Output Series.

Optional Equipment:

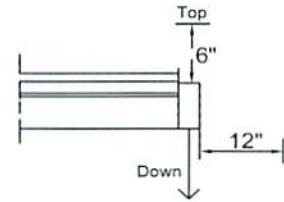
- Elbow kit / 180 degree U-Bend kit for PH-50 and PH-75
- Stainless Steel Radiant Emitter
- 24 Volt Electrical Supply



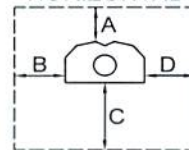
CLEARANCE TO COMBUSTIBLES

(EXHAUST END)

OUTDOOR APPLICATIONS ONLY

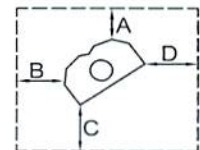


HORIZONTAL



Standard Reflector

TILT



(inches)

25° to 45° Tilt

Installation Type 1

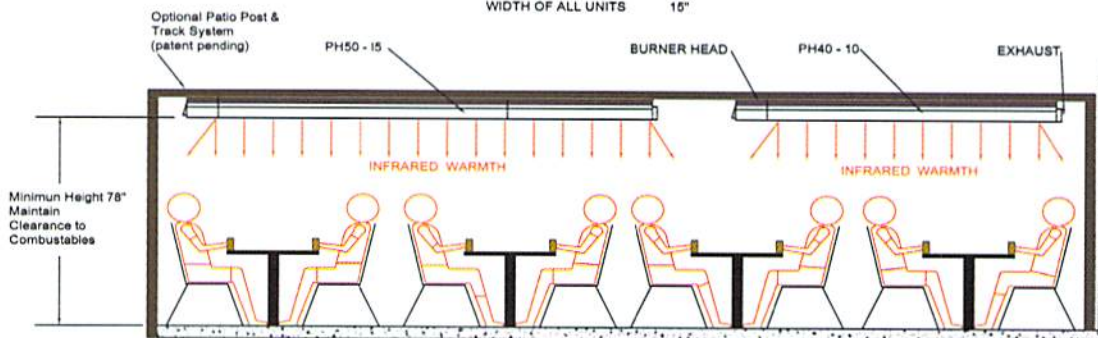
Input	A	B	C	D
40	4	12	34	12
50	4	12	41	12
75	4	15	46	15
40 HO	8	17	41	17
75 HO	6	12	42	12

Installation Type 2

Input	A	B	C	D
40	4	4	31	28
50	4	4	35	28
75	4	4	40	31
40 HO	8	4	28	25
75 HO	6	4	31	22

DIMENSIONS

MODEL	LENGTH
PH40	137"
PH50	197"
PH75	257"
PH40 HO	64"
PH75 HO	124"
WIDTH OF ALL UNITS	15"



Example of a multiple unit installation. In this instance two units are used to provide a comfortable heating environment. More units can be used to achieve any length or configuration required.

Calcana's design expertise is offered to all customers to ensure proper layout & performance.

© All rights reserved. No part of this work herein may be reproduced or copied in any form or by any means - graphic, electronic, or mechanical, including photocopying, recording, taping or information storage and retrieval systems - without written consent from CALCANA INDUSTRIES LTD. The information herein is current at the time of printing, but may be subject to change at any time without notice. 2010 - CALCANA INDUSTRIES LTD.

PRINTED IN CANADA BY TOPLINE PRINTING

CANADA

Calcana Industries Ltd.
5507 - 6th St. S.E.
Calgary, Alberta, Canada, T2H 1L6
Tel: 403-777-0808 Fax: 403-777-0807

USA

Calcana USA Ltd.
30245 Suite A, County Rd 49
Loxley, Alabama, 36551
Tel: 251-964-4400 Fax: 251-964-4404

Distributed by:

1-800-778-6729

Website: www.calcana.com

email: sales@calcana.com